



10 MAY 2024

NAENAE COLLEGE

He moana
pukepuke e
ekengia e te waka

A choppy sea can be
navigated by a waka

Tēnā koe



We are underway with Term Two and it's been a busy start as we settle back into our teaching and student learning. Every term we focus on one of our uara, or values, to help enhance our core business of educating our rangatahi. This term we are focusing on 'Kotahitanga', a Māori word that means unity or togetherness. It's about working together and it's central to the idea that we lift each other up, support each other and receive the same back. In the first week back in Assembly, I spoke to the students about how we can demonstrate this uara using the following key points;

- Partnership: We are working together with our teachers and classmates
- Participation: We need to attend class and wear our uniform with pride
- Protection: Working together means we protect the rights of all students to learn and not disrupt others in class
- Value – belief: We believe that by working together we will all learn and grow
- Honour: There is great honour and mana to helping those around us learn so that we can then receive the same back
- Truth: There is no getting away from the truth that working together can be hard at times and we have to persevere through those hard times to truly gain the benefit our efforts deserve.

Looking ahead this term, there are a number of opportunities for our whānau/inga/community to join us here at the kura in the spirit of kotahitanga. We have the Waiopahu College sports exchange, a Pasifika Community evening, a Māori community evening, our parent-teacher interviews and our multicultural day, not to mention the fabulous Hutt Fest, where our Polynesian Club and Te Whānau Tahī Kapa Haka will be performing. Check out our social media sites to get more details about these cool events and how to get involved.

I look forward to seeing you out and about at these events. As always, I am available if you have something you wish to discuss with me; please contact the office to set up a time to meet.

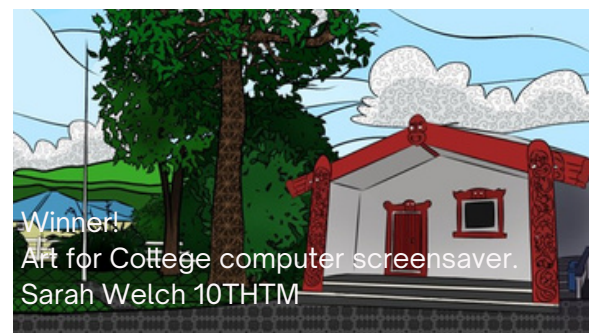
CHRIS TAYLOR
PRINCIPAL



Winner!
Art for main entrance
of new admin block.
Keira Dempsey 12KLEJ



Winner!
Art for Principal's new office.
Jacquelyn Alheit 10KHJY



Winner!
Art for College computer screensaver.
Sarah Welch 10THM

PINK SHIRT DAY FRIDAY 17 MAY

WE ARE PARTICIPATING IN PINK SHIRT DAY 2024, AN ANNUAL BULLYING PREVENTION CAMPAIGN RUN BY THE MENTAL HEALTH FOUNDATION. THIS WILL BE A NON UNIFORM DAY WITH STUDENTS ENCOURAGED TO WEAR PINK TO SHOW THEIR SUPPORT. STUDENTS ARE ASKED TO BRING A GOLD COIN DONATION TO HELP WITH THE FUNDRAISING EFFORT. THERE WILL BE CANTEEN VOUCHER PRIZES FOR THE BEST THEMED OUTFIT IN EACH YEAR LEVEL.

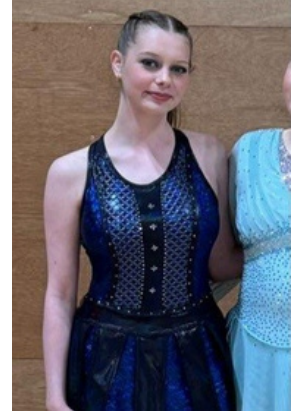
EARLY CLOSURE DAY ON MONDAY 13 MAY

3 X 70 MINUTE PERIODS ENDING WITH LAR KAI TIME

- PERIOD 1 - 8.45 - 9.55AM
- PERIOD 2 - 10.00 - 11.10AM
- INTERVAL - 11.10 - 11.30AM
- PERIOD 3 - 11.35 - 12.45PM
- LAR KAI - 12.45 - 1.00PM
- BELL WILL RING FOR END OF DAY AT 1PM

CAITLIN MUNN

College Sport Wellington
Regional Artistic
Roller Skating Championship



NAENAE COLLEGE MUSIC MONTH

NAENAE COLLEGE IS PARTICIPATING IN NEW ZEALAND MUSIC MONTH BY CELEBRATING MUSIC IN THE SCHOOL. EVERY FRIDAY OUR MUSIC STUDENTS ARE HOSTING LUNCHTIME PERFORMANCES AND ACTIVITIES TO PROMOTE MUSIC. THIS IS A GREAT OPPORTUNITY FOR OUR STUDENTS TO GET INVOLVED AND SHOWCASE THEIR TALENTS.

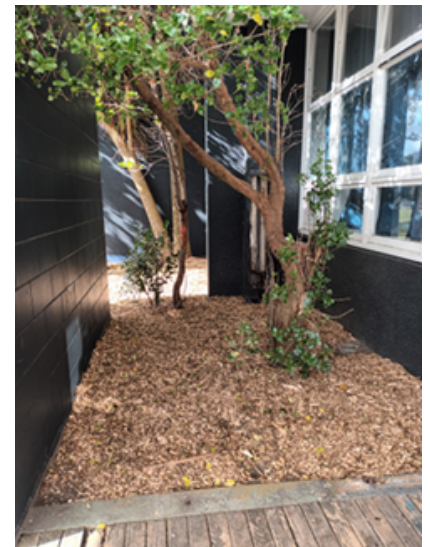
SCHOOL IMPROVEMENTS



NEWLY PAINTED HALLWAY



THANKS TO SPENCERS FOR THE TIDY UP OF THE GARDENS AROUND THE SPECIAL NEEDS UNIT!




SAVE THE DATES!

Monday 27 to Wednesday 29 May:
 Monday 3 June:
 Tuesday 4 June:
 Wednesday 19 June:
 Thursday 27 June:
 Friday 28 June:
 Monday 1 to Friday 5 July:
 Friday 5 July:

Early closure for NCEA CAA Literacy and Numeracy Exams
 King's Birthday Public Holiday
 Teacher Only Day
 Early closure 1:00pm for Parent Teacher Interviews
 Multicultural Day
 Matariki Public Holiday
 Hutt Fest
 End of Term 2.

SchoolBridge App

If you haven't already, please download the SchoolBridge App to receive the latest news and communications from the College, advise us of absences and book learning conferences.



The banner features the Naenae College crest and name on the left. In the center, there is a QR code and two buttons for downloading the app: 'Download on the App Store' and 'GET IT ON Google Play'. To the right, two smartphones display the app's interface, which includes a 'Sign In' button and a 'Can't Sign In?' link. A kiwi bird is perched on the bottom right of the phones. Text instructions are provided below the QR code and buttons.

Download Our App

- Scan the QR Code to download. Or
- Search "**schoolbridge**" on your mobile AppStore or PlayStore.

Once you have downloaded the app, you can sign in using your school account information. Please contact the school if you need help with your account details.

Reminders from Accounts:

Winter Sports Fees due 17 May.

Summer Sports Fees now overdue, if not already paid.

Payment options:

A. Eftpos/Cash - can be paid directly at Reception

B. Automatic/Online payment - Naenae College

Account number 02-0540-0044653-00

Please remember to put your child's name in the reference.

You can make your payment in one lump sum or spread your payments by term, monthly or fortnightly with automatic payments. Fundraising options are available to help pay your sports fees if required. Please see Mrs Manual at the sports office for more information.

Term dates - 2024

Term 1 – Monday 29 January to Friday 12 April

Term 2 – Monday 29 April to Friday 5 July

Term 3 – Monday 22 July to Friday 27 September

Term 4 – Monday 14 October to Thursday 12 December

Public holidays 2024

6 February – Waitangi Day

29 March – Good Friday

1 April – Easter Monday

25 April – ANZAC Day

3 June – King's birthday

28 June – Matariki

28 October – Labour Day

**If your child is away from school,
please advise us via the
SchoolBridge App (absences) or
call Student Services on
04 5677175 or 0800 662 655**